

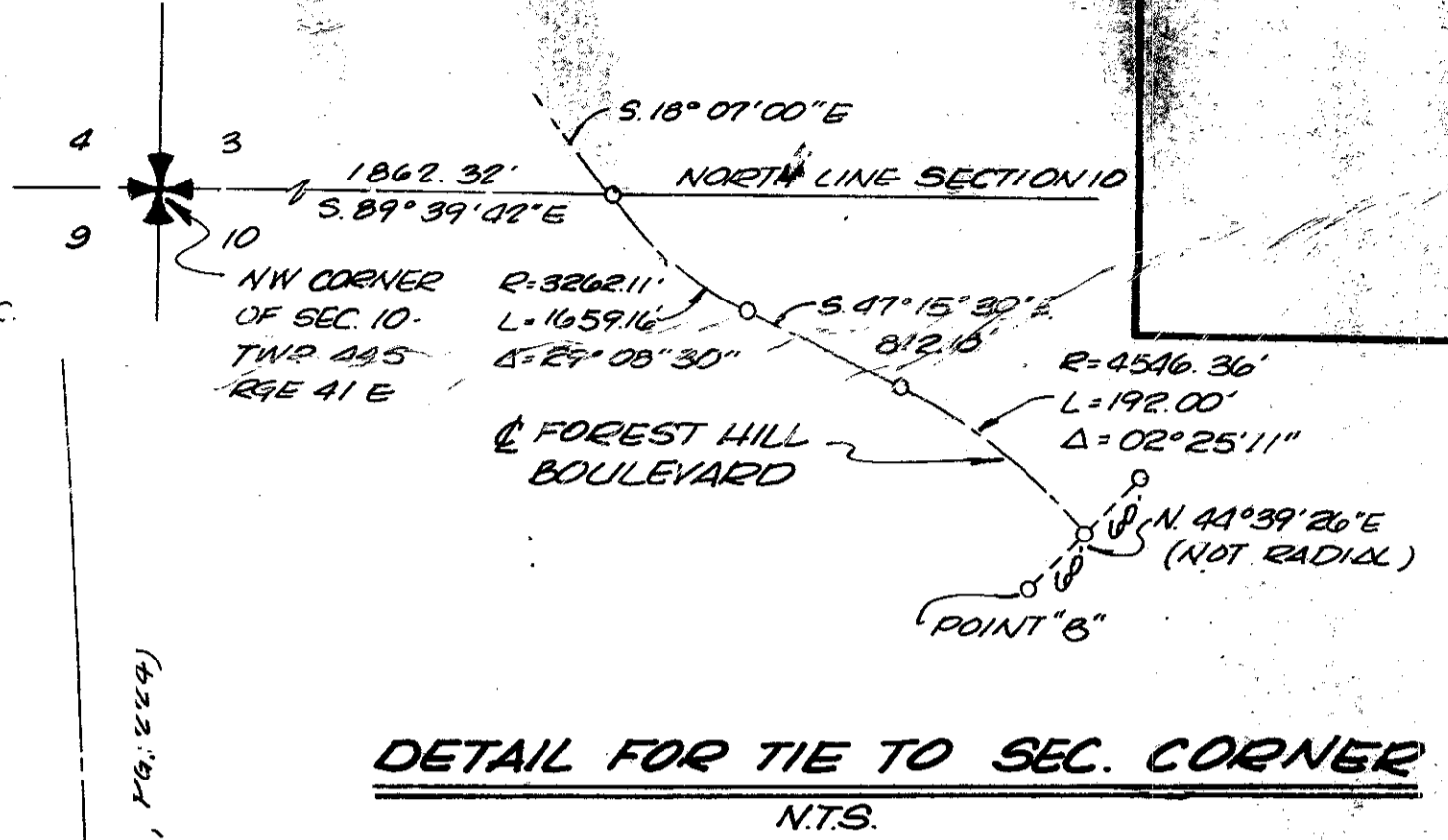
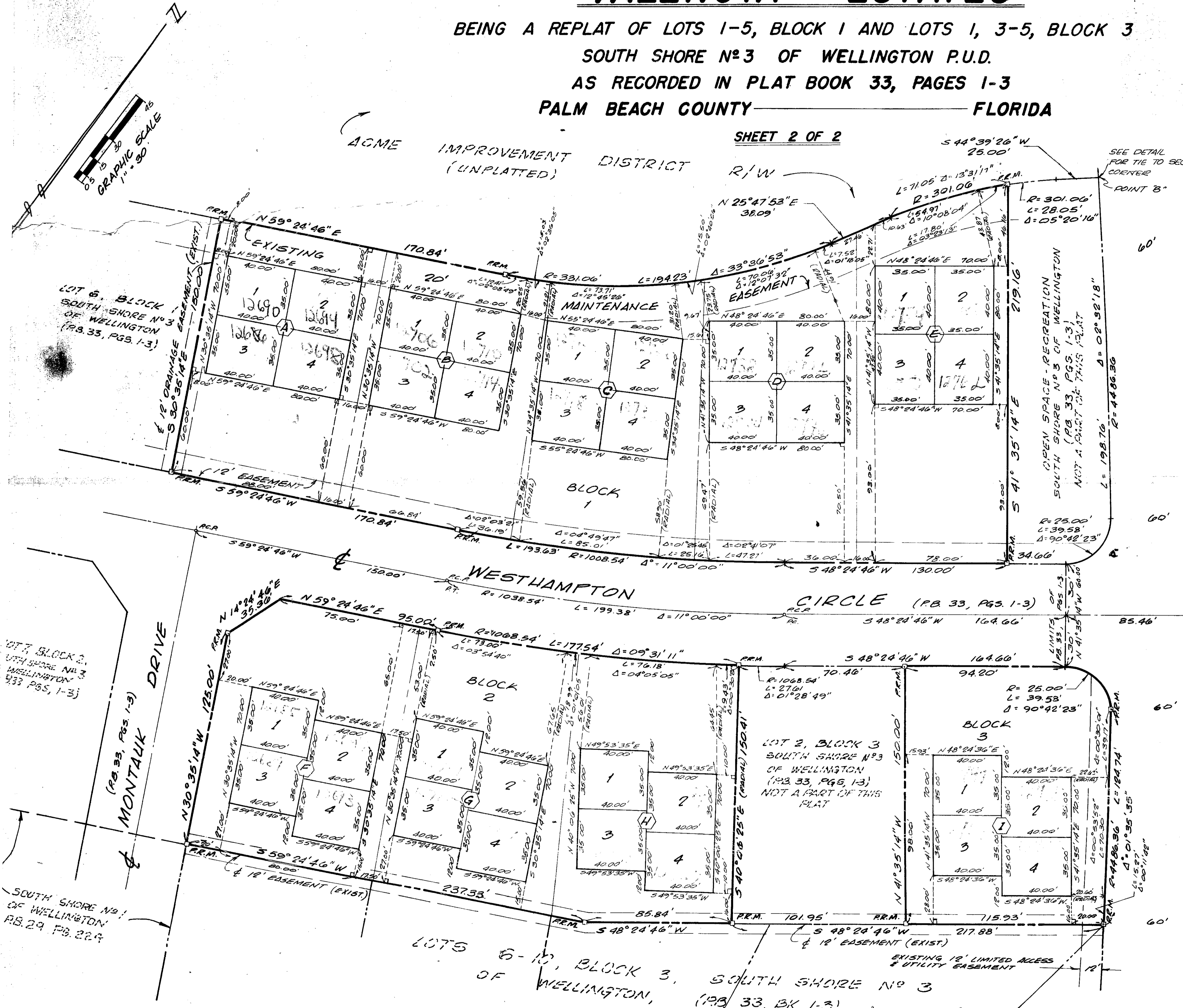
42/32

32

# PLAT OF VALENCIA ESTATES

BEING A REPLAT OF LOTS 1-5, BLOCK 1 AND LOTS 1, 3-5, BLOCK 3  
SOUTH SHORE NO 3 OF WELLINGTON P.U.D.  
AS RECORDED IN PLAT BOOK 33, PAGES 1-3  
PALM BEACH COUNTY FLORIDA

SHEET 2 OF 2



LOT 6, BLOCK 1  
SOUTH SHORE NO 3  
OF WELLINGTON  
(PB 33, PGS. 1-3)

LOT 7, BLOCK 2,  
SOUTH SHORE NO 3  
OF WELLINGTON  
(PB 33, PGS. 1-3)

SOUTH SHORE NO 3  
OF WELLINGTON  
PB 29, PB 22, 2

LOTS 6-10, BLOCK 3,  
SOUTH SHORE NO 3  
OF WELLINGTON,  
(PB 33, BK 1-3)

FOREST HILL BOULEVARD (PB 29, PG. 22, 23)

329  
0332-341

FELLOWS, READ & ASSOCIATES

560 CORPORATE WAY SUITE 204  
WEST PALM BEACH FLORIDA 33407  
TELE. 1-305 686-4105  
FLORIDA DIVISION

Valencia Est. 42/32